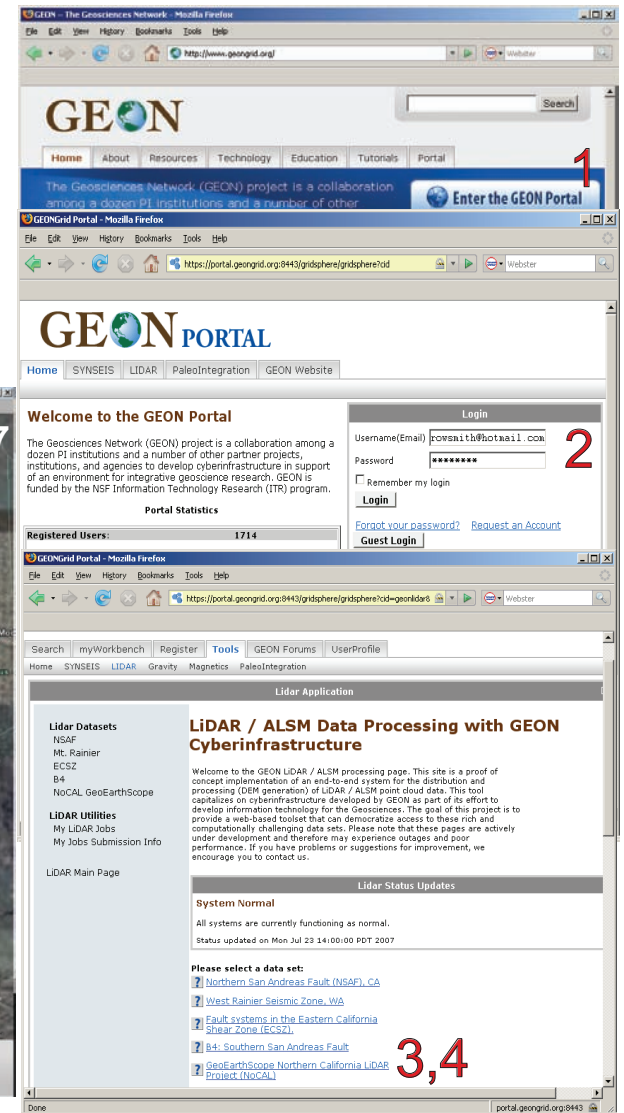
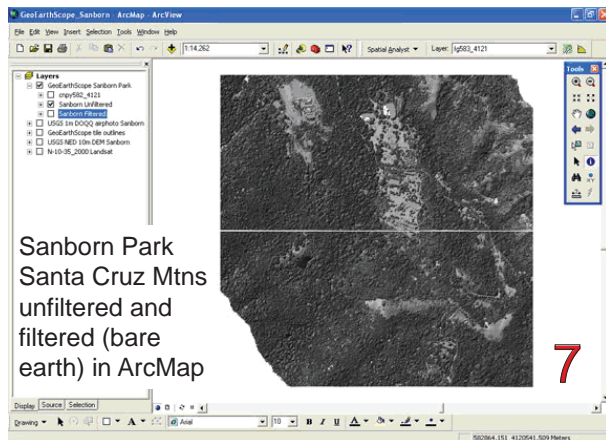
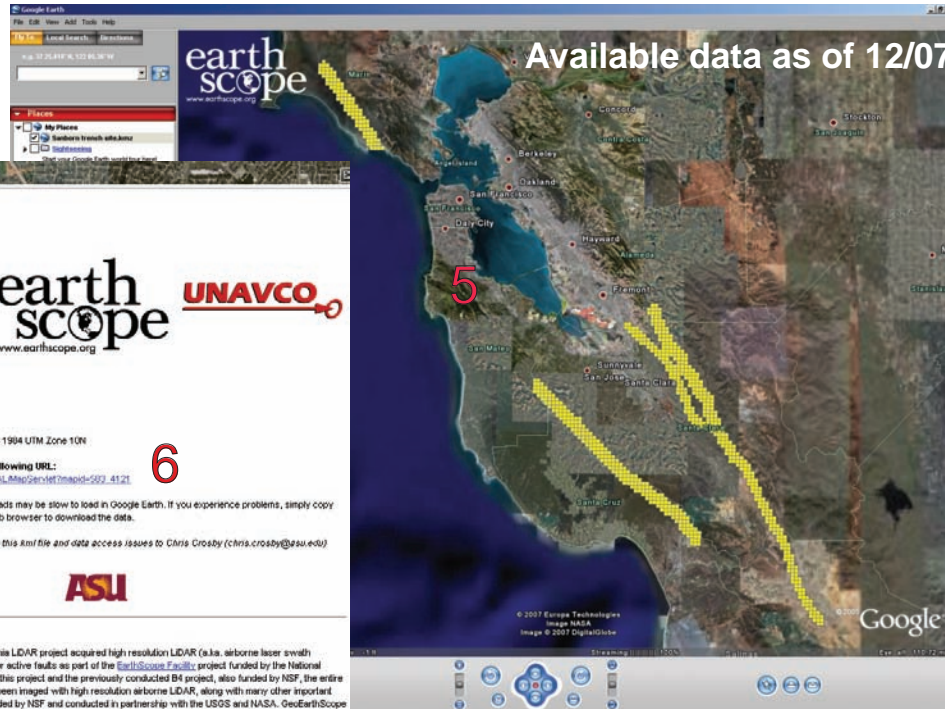


GeoEarthscope "NoCAL" LiDAR Data Available!

Steps to access:

- 1) Go to www.geon.org
- 2) Get a portal account and enter the GEON Portal
- 3) Click on the Tools tab and then choose GEON LiDAR
- 4) Select the GeoEarthScope Northern California LiDAR Project (NoCAL) data set
- 5) Download the KML file and launch it into Google Earth
- 6) Use Google Earth to find the tiles of interest, click on the point in the middle, and download the data.
- 7) Use ArcGIS or Global Mapper for example to interact with the data.

More data and more pathways are coming soon!



The GeoEarthscope LiDAR Workflow builds upon the successful GEON LiDAR Workflow (GLW) prototype developed by the GEON project (<http://www.geon.org/science/lidar.html> and <http://lidar.asu.edu>). The GLW is an airborne LiDAR (a.k.a. ALSM - Airborne Laser Swath Mapping) data processing and delivery system. This system "democratizes" access to community airborne LiDAR data such as the Geo-Earthscope datasets by enabling the users to access the "raw" point cloud data and then process them on the fly based on user specifications. In addition, we have built a simple tile-based approach for delivery of pre-processed 1 km² digital elevation model (DEM) data. The GLW utilizes cyberinfrastructure tools such as authenticated access portals, web services, and high-performance computing to enable science and education using airborne LiDAR data.

More information at lidar.asu.edu